

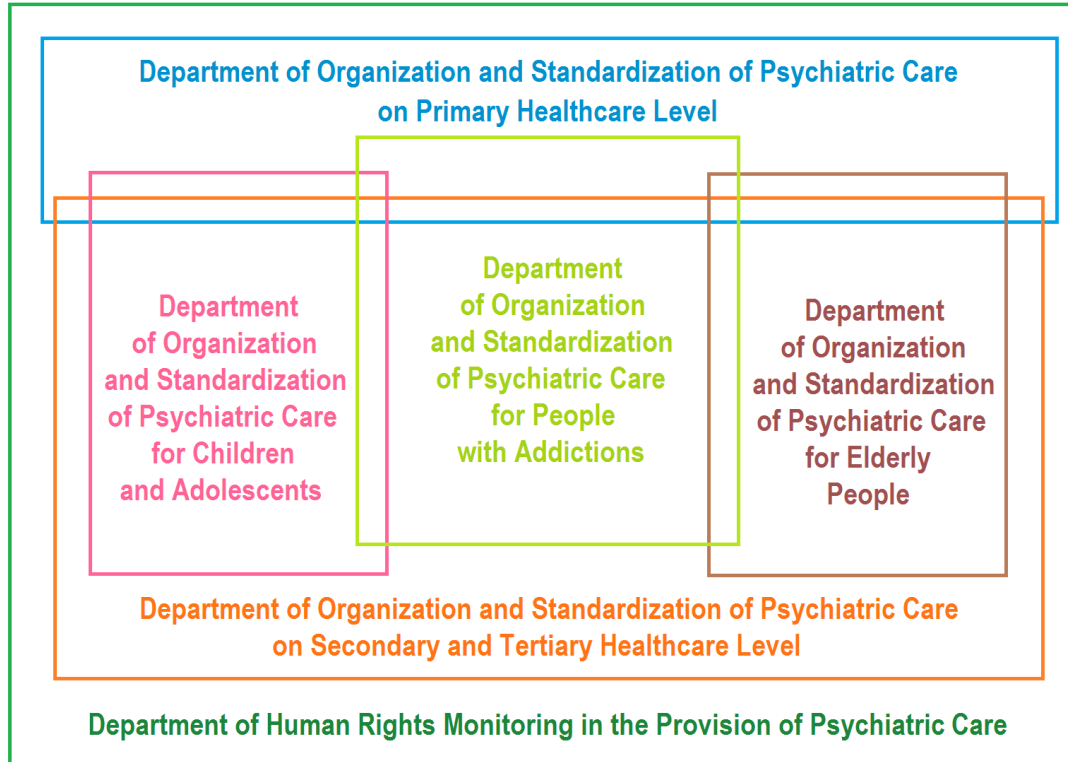
The Needs of Psychiatry in Wartime

Oleksii Sukhovii

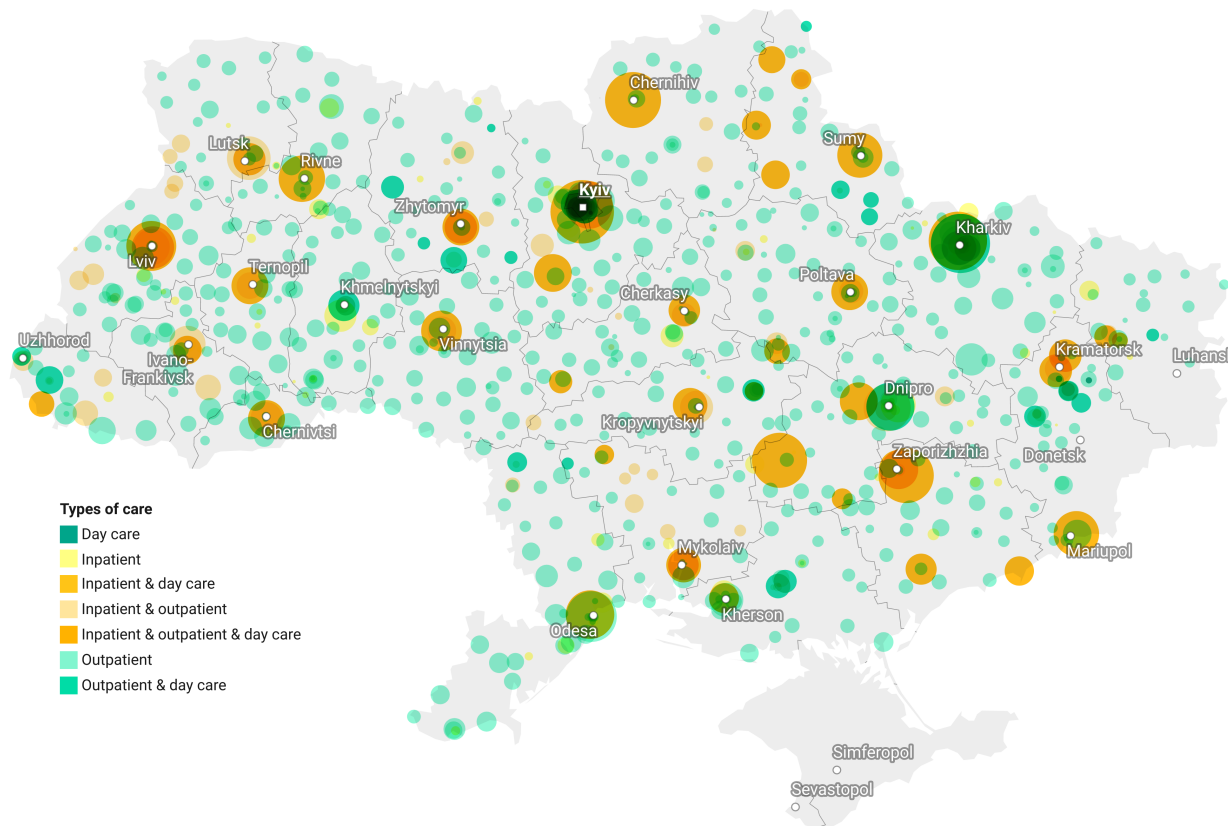
Head of the Center for the
Organization of Psychiatric
Care at the Institute of
Psychiatry, Forensic
Psychiatric Examination and
Drug Monitoring of the
Ministry of Health of Ukraine

Center for the Organization of Psychiatric Care

(Interaction of departments in the structure of the Center)

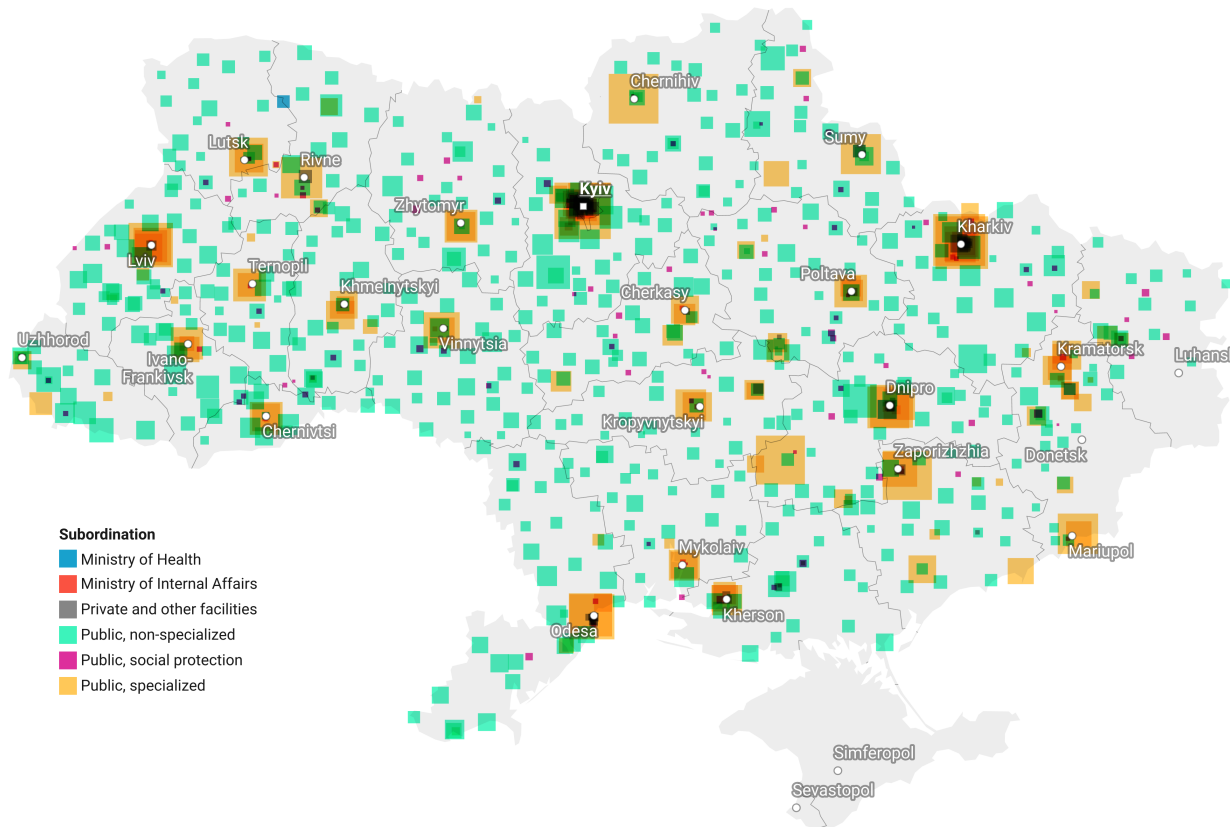


Network of psychiatric care institutions in Ukraine, by type of care



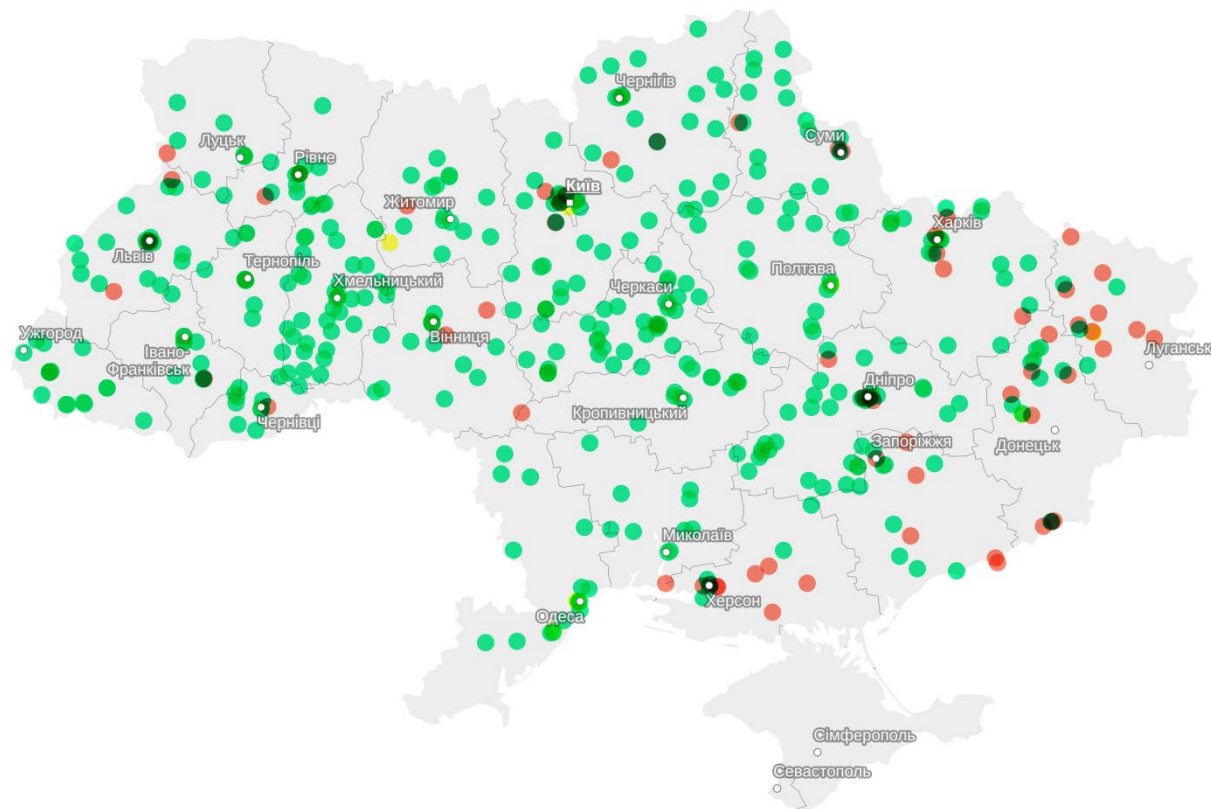
901 institutions who provided various types of psychiatric care in 2019 (including for people with substance use disorders) are marked on the map

Network of psychiatric care institutions in Ukraine, by the subordination



901 institutions of different subordination, who provided various types of psychiatric care in 2019 (including for people with substance use disorders) are marked on the map

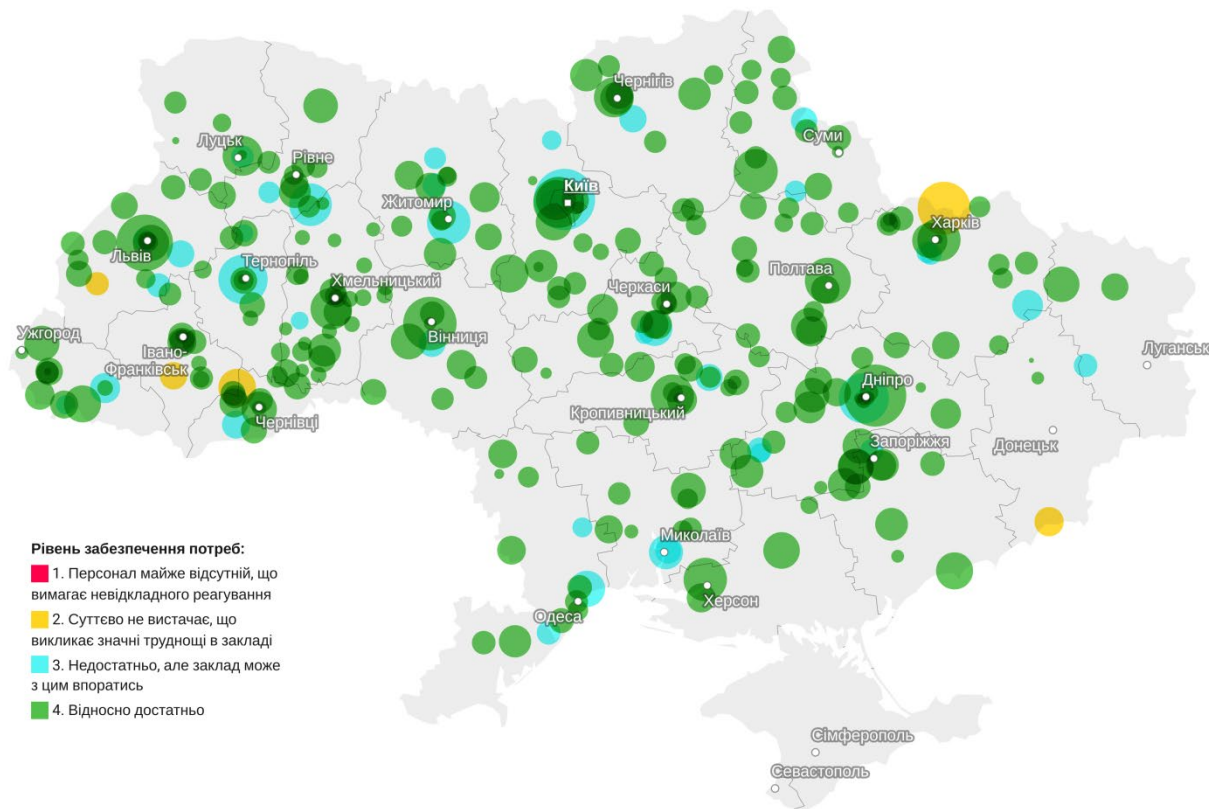
Participation in the survey on the needs of psychiatric institutions and social protection institutions



470 psychiatric care and social protection institutions have been identified, including:

- 400 institutions provided information on the number of persons, as of March-May 2022, in the second round of the survey,
- and 9 institutions - only in the first round
- 61 institution - no information on needs provided as of May 7th, 2022

Needs of psychiatric care and social protection institutions: Staffing

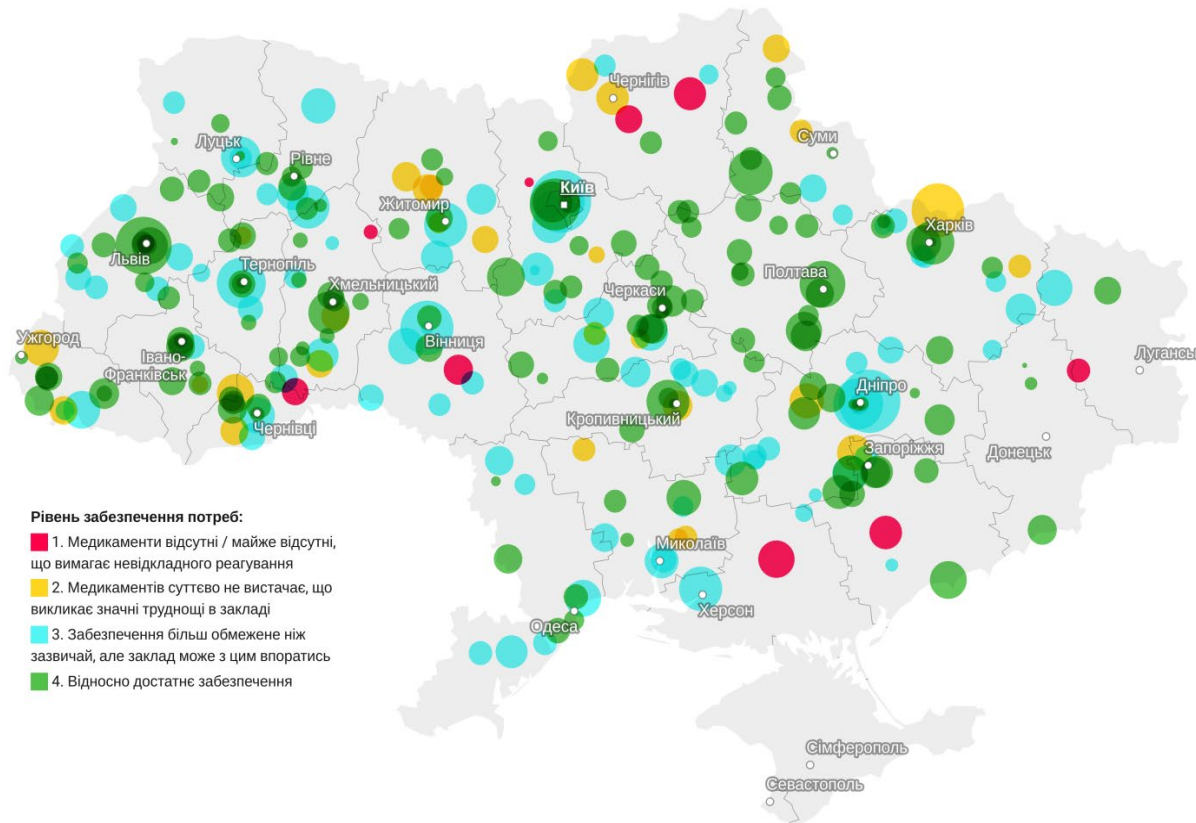


304 institutions for the psychiatric care and social protection for persons with mental disorders, the information regarding the needs of institutions in staffing. The size of the circle corresponds to the number of people who were in the institution as of March-May 2022. The color indicates the level of needs (on a 4-point scale)

Level of needs:

1. Staff is almost absent, which requires an immediate response
2. Significantly lacking, which causes significant difficulties in the institution
3. Not enough, but the institution can handle it
4. Relatively enough

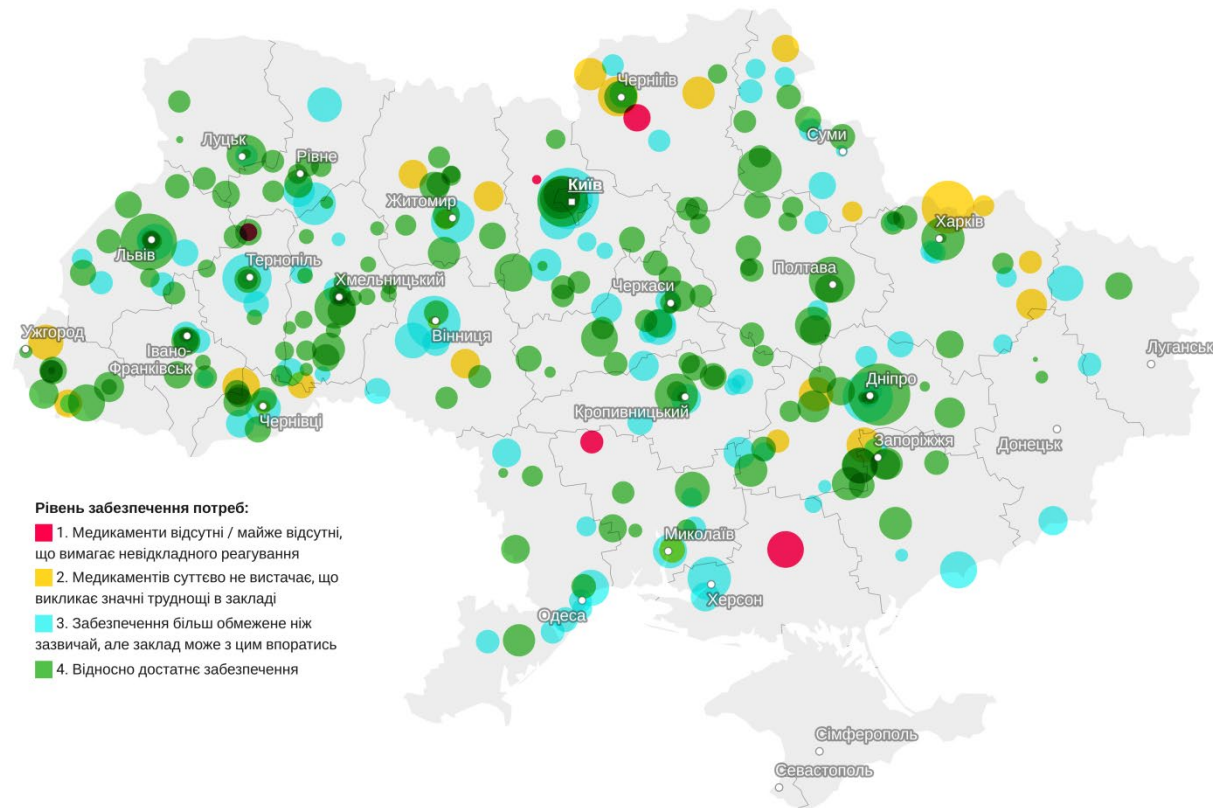
The needs of psychiatric institutions and social protection institutions: Psychotropic drugs



304 institutions for the psychiatric care and social protection for persons with mental disorders, the information regarding the needs of institutions in psychotropic drugs. The size of the circle corresponds to the number of people who were in the institution as of March-May 2022. The color indicates the level of needs (on a 4-point scale)
Level of needs:

1. Medicines are absent / almost absent, which requires an immediate response
2. There is a significant shortage of medicines, which causes significant difficulties in the institution
3. Supply is more limited than usual, but the institution can handle it
4. Relatively sufficient supply

Needs of psychiatric institutions and social protection institutions: Other medications (except psychotropic)

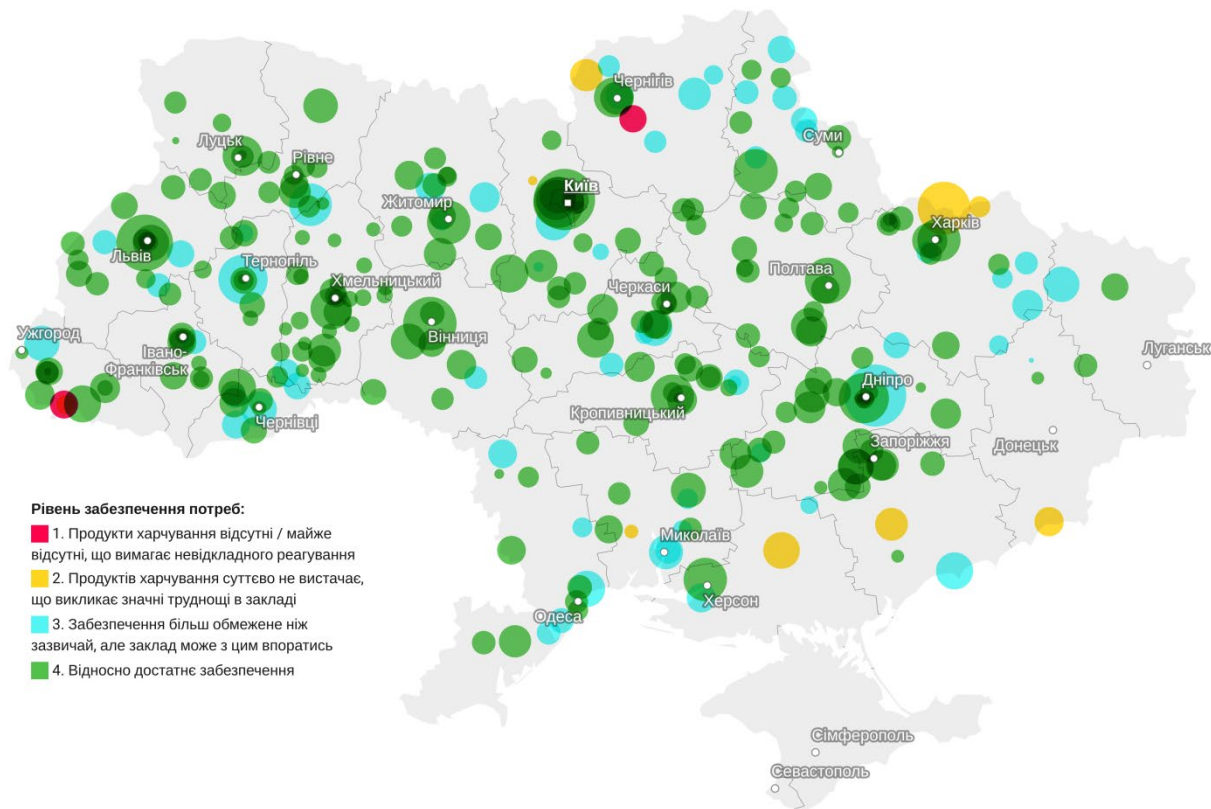


304 institutions for the psychiatric care and social protection for persons with mental disorders, the information regarding the needs of institutions in medicines other than psychotropic drugs.

The size of the circle corresponds to the number of people who were in the institution as of March-May 2022. The color indicates the level of needs (on a 4-point scale)
Level of needs:

1. Medicines are absent / almost absent, which requires an immediate response
2. There is a significant shortage of medicines, which causes significant difficulties in the institution
3. Supply is more limited than usual, but the institution can handle it
4. Relatively sufficient supply

The needs of psychiatric institutions and social protection institutions: Food

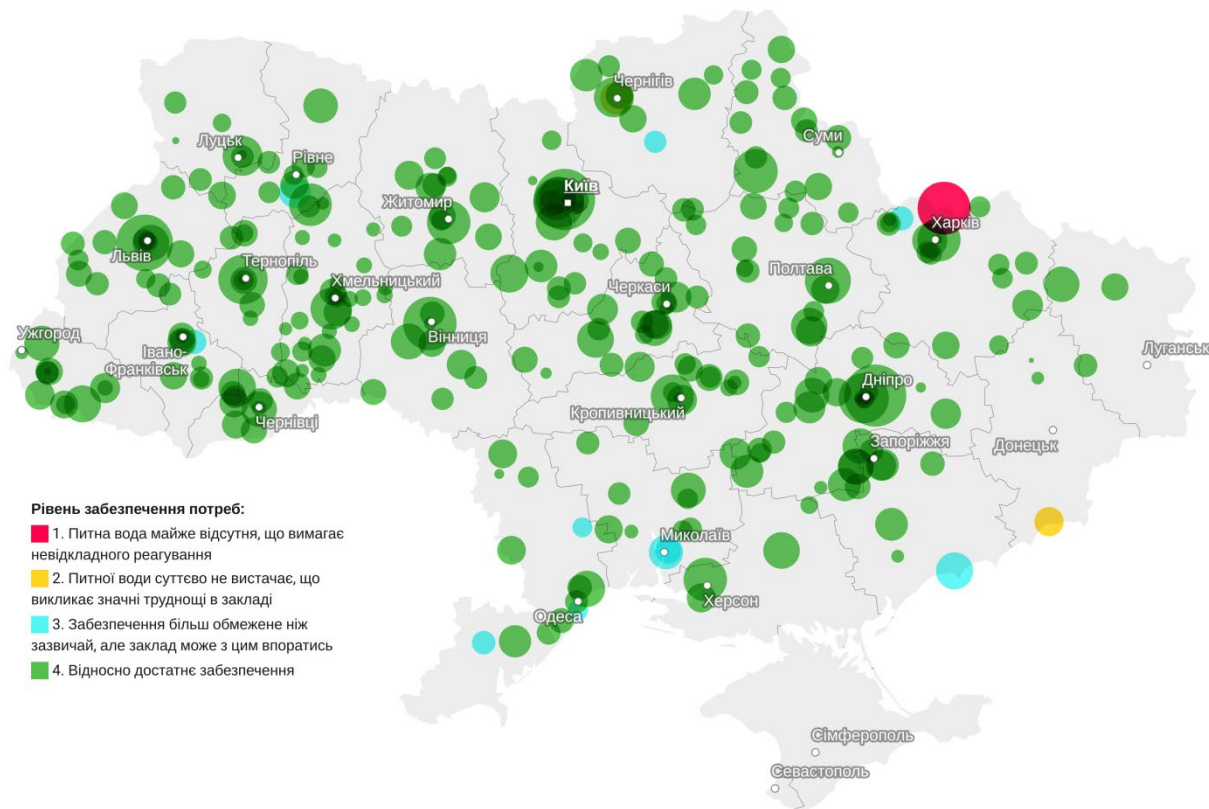


304 institutions for the psychiatric care and social protection for persons with mental disorders, the information regarding the needs of institutions in food. The size of the circle corresponds to the number of people who were in the institution as of March-May 2022. The color indicates the level of needs (on a 4-point scale)

Level of needs:

1. Food is absent / almost absent, which requires an immediate response
2. There is a significant shortage of food, which causes significant difficulties in the institution
3. Supply is more limited than usual, but the institution can handle it
4. Relatively sufficient supply

Needs of psychiatric institutions and social protection institutions: Drinking water



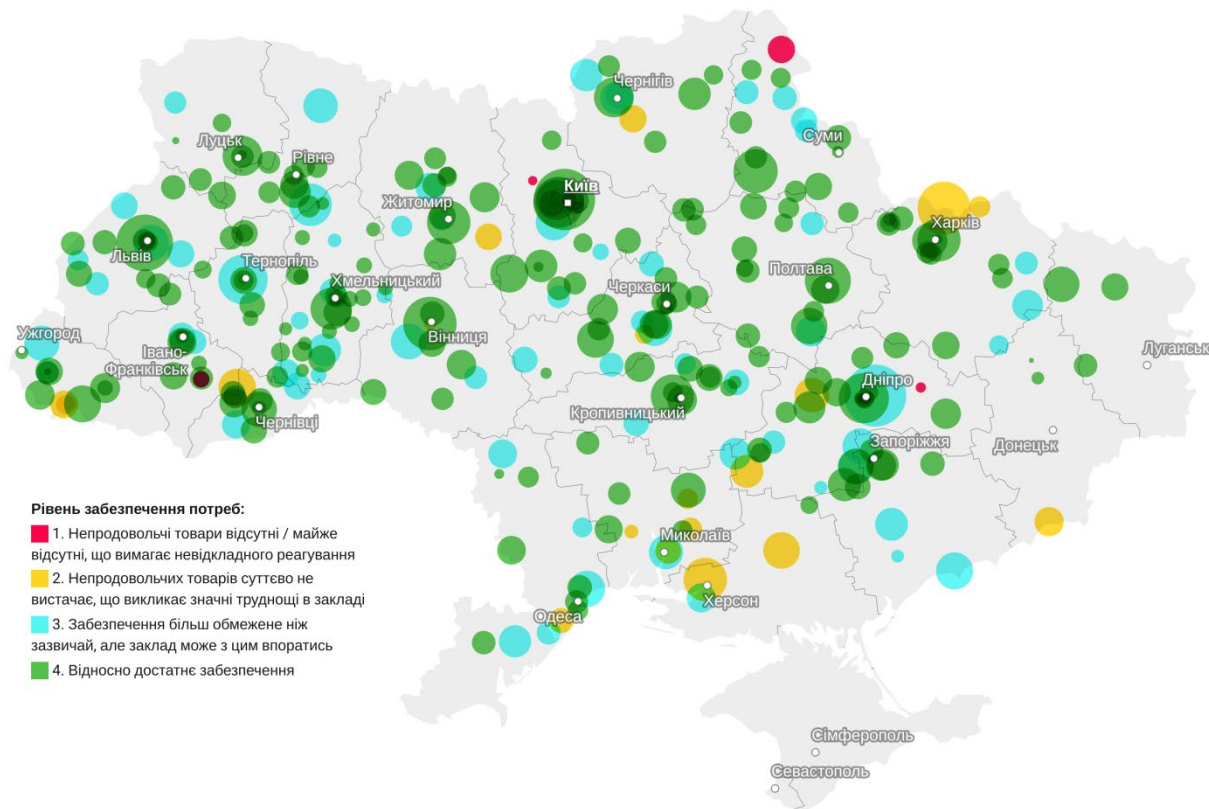
304 institutions for the psychiatric care and social protection for persons with mental disorders, the information regarding the needs of institutions in drinking water.

The size of the circle corresponds to the number of people who were in the institution as of March-May 2022. The color indicates the level of needs (on a 4-point scale)

Level of needs:

1. Drinking water is almost absent, which requires an immediate response
2. There is a significant shortage of drinking water, which causes significant difficulties in the institution
3. Supply is more limited than usual, but the institution can handle it
4. Relatively sufficient supply

Needs of psychiatric institutions and social protection institutions: Non-food products



304 institutions for the psychiatric care and social protection for persons with mental disorders, the information regarding the needs of institutions in non-food products. The size of the circle corresponds to the number of people who were in the institution as of March-May 2022. The color indicates the level of needs (on a 4-point scale) Level of needs:

1. Non-food products are absent/ almost absent, which requires an immediate response
2. There is a significant shortage of non-food products, which causes significant difficulties in the institution
3. Supply is more limited than usual, but the institution can handle it
4. Relatively sufficient supply

Interactive visualization:
<https://datawrapper.dwcdn.net/Aldvo/4/>



Thank you!